

Indice  
Index

## I Rovereschi Collection

<b>Narciso</b>	<b>29</b>
<b>Bellagio</b>	<b>47</b>
<b>Libra</b>	<b>65</b>

# 2021

## I Rovereschi Collection

signed by  
Stefania Tognoloni

Una collezione davvero innovativa per i 30 anni di Della Rovere. Il tratto fondante di Narciso, Bellagio e Libra è costituito dai requisiti di solidità ed eleganza. Analizzando queste chiavi per soluzioni progettuali, abbiamo esplorato tutti gli aspetti materici e volumetrici sotto un profilo prettamente architettonico. Il lavoro progettuale che ha portato a tutte e tre le collezioni è stato esattamente quello che si conduce tratteggiando la costruzione di un edificio: dev'essere solido, portante, deve trasmettere l'identità di chi lo vive e dev'essere funzionale. E bello. Una volta trovati i giusti equilibri per piani macro e forti spessori, abbiamo tradotto queste combinazioni in scrivanie e complementi d'arredo office funzionali ed eleganti, facendo interagire materiali di classe che richiamano la nautica più classica: legni, con modanature e lavorazioni affini, ottoni e pelle chiara.

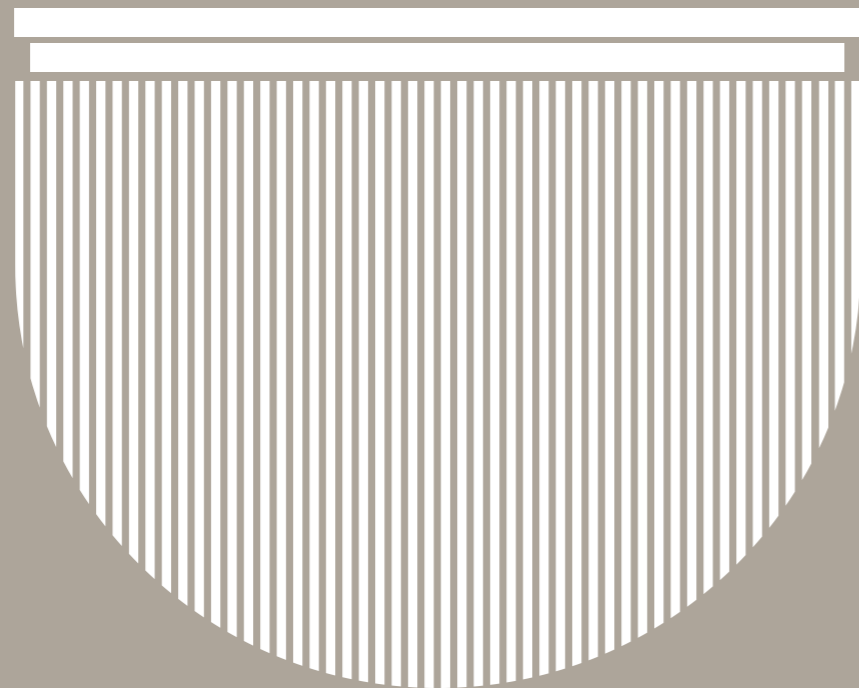
Abbiamo deciso di dare un valore nuovo anche ad alcuni elementi, altrove ritenuti opzionali, che in questo caso sono divenuti funzionali. Il pannello modesty, per esempio, diventa quasi strutturale e, comunque, fondamentale nell'equilibrio di volumi e spessori. Pur essendo nate insieme, dunque, Narciso, Bellagio e Libra offrono declinazioni molto diverse tra loro degli stessi materiali, ma l'esito dello sguardo conclude sicuramente sempre un effetto di solidità, eleganza e autorevolezza.

A truly innovative collection for Della Rovere's 30<sup>th</sup> anniversary. The basic feature of Narciso, Bellagio and Libra is composed by requirements of requisites of solidity and elegance. By analyzing these keys for design solutions, we explored all the material and volumetric aspects from a purely architectural point of view. The design work that led to all three collections was exactly what is carried out by outlining the construction of a building: it must be solid, load-bearing, it must convey the identity of those who live in it and it must be functional. It's nice. And beautiful. Once we found the right balance for macro tops and strong thicknesses, we translated these combinations into functional and elegant desks and office furnishing accessories, interacting with classy materials that recall the most classic boating: dark woods, with similar moldings and processes, brass and light leather.

We decided to give a new value also to some elements, elsewhere considered optional, which in this case have become functional. The modesty panel, for example, becomes almost structural and, in any case, fundamental in the balance of volumes and thicknesses. Despite being born together, Narciso, Bellagio and Libra offer very different declinations of the same materials, but the outcome of the look certainly always concludes an effect of solidity, elegance and authority.







# Narciso

**Una collezione complessa.  
Narciso è diversa da sé stessa ogni  
volta che cambia il punto di vista  
da cui si specchia. A complex collection.  
Narciso is different from itself  
every time the point of view from  
which one is mirrored changes.**

La nitidezza delle linee è sorpresa dalla rotondità perfetta di una gamba lignea a semicerchio che alza un piano a forte spessore, in cui accanto al legno si può delineare uno spazio di lavoro.

Le imbottiture degli inserti in pelle e le modanature dei legni in lavorazione opaca si aggiungono all'uso delle fughe in acciaio ottonato, elemento distintivo dei prodotti Della Rovere, che insieme elevano ed impreziosiscono un design che si ispira agli interni di manifattura pregiata degli yacht classici.

Legno, acciaio ottonato e metalli bruniti, pelli imbottite e impunturate si alternano in maniera imprevedibile anche nel pannello modesty, che diventa essenziale all'estetica di Narciso.

The sharpness of the lines is surprised by the perfect roundness of a wooden leg in a semicircle that raises a very thick top, in which a leather work space can be outlined next to the wood

The padding of the leather inserts and the moldings of the woods in opaque processing are added to the use of brass-plated steel joints, a distinctive element of Della Rovere products, which together elevate and embellish a design that is inspired by the fine manufacturing interiors of classic yachts.

Wood, brass-plated steel and burnished metals, padded and stitched leathers alternate in an unpredictable way even in the modesty panel, which becomes essential to the aesthetics of Narciso.

**Solidità e Leggerezza**  
Solidity and Lightness





























# Finiture Finishes

## Legno/Wood

Noce fumè  
Smoked walnut



Rovere cioccolato  
Chocolate oak



## Metallo/Metal

Oro/Bronzo  
Gold/Bronze

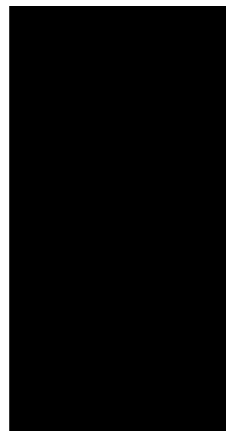


## Melaminici/Melamine

Nero lucido  
Glossy black



Nero opaco  
Matt black



Avorio effetto similpelle  
Ivory eco-leather effect



## Pelle/Leather

Ecopelle avorio  
Ivory eco-leather



Ecopelle testa di moro  
Brown eco-leather





# Bellagio

Quando si uniscono elementi dalle singolari bellezze si ottiene un panorama che resta impresso nella memoria. Bellagio, ispirata alle armonie del panorama lacustre, è frutto di accurati accostamenti e stratificazioni di colori e materiali, in cui ciascun elemento mantiene un'identità precisa, che contribuisce alla ricchezza dell'insieme.

A memorable panorama is obtained when elements of singular beauty are combined together. Bellagio, inspired by the harmonies of the lake panorama, is the result of careful combinations and stratifications of colors and materials, in which each element maintains a precise identity, which contributes to the richness of the whole.

Il piano scrivania in combinazione di legno a forte spessore e pelli, sembra fluttuare rispetto alle alzate e al pannello modesty, completamente rivestiti nella stessa gradazione di pelle. Questo effetto di levitazione è ottenuto grazie all'anello rettangolare in acciaio ottonato, che diventa elemento di stacco ed unione allo stesso tempo.

La stessa rifinitura in metallo, tratto distintivo di Della Rovere, ricorre anche lungo la testa del pannello modesty diventandone elemento strutturale.

The desktop, in combination of thick wood and ivory-colored leathers for the desk pad, seems to float with respect to the risers and the modesty panel, completely covered in the same shade of leather. This levitation effect is obtained thanks to the rectangular ring in brass-plated steel / burnished metal, which becomes an element of detachment and union at the same time.

The metal finish itself, a distinctive feature of Della Rovere, also recurs along the head of the modesty panel, becoming a structural element.

Gravità senza Contatto  
Non-Contact Gravity

B







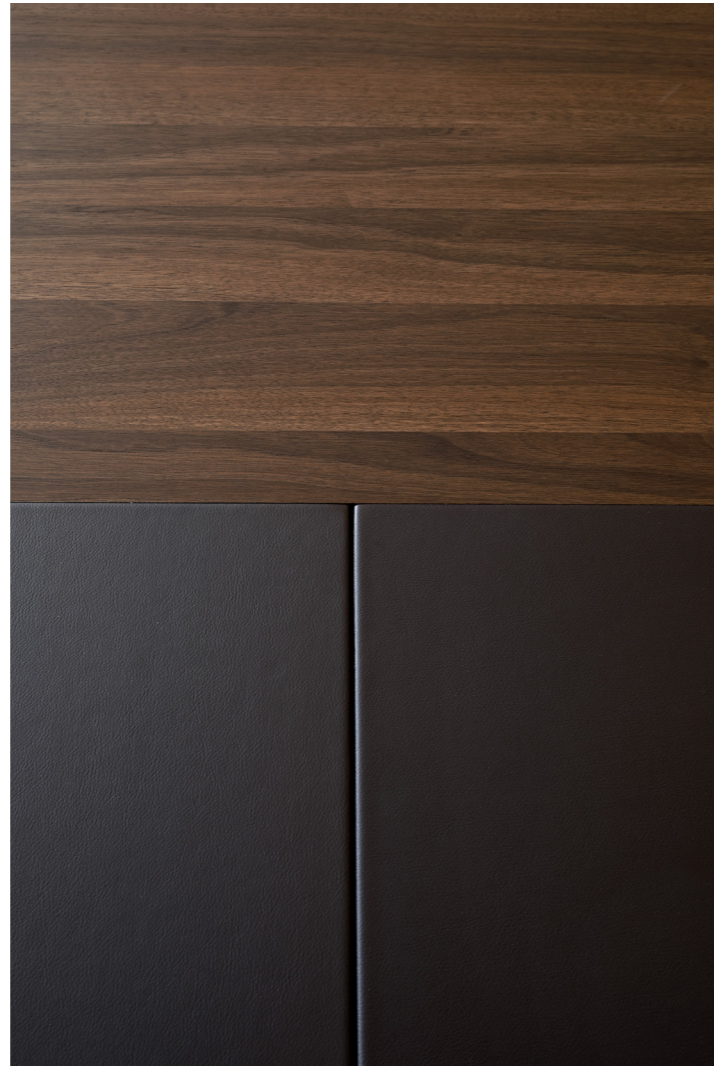






















# Finiture Finishes

## Legno/Wood

Noce fumè  
Smoked walnut



Rovere cioccolato  
Chocolate oak



## Metallo/Metal

Oro/Bronzo  
Gold/Bronze

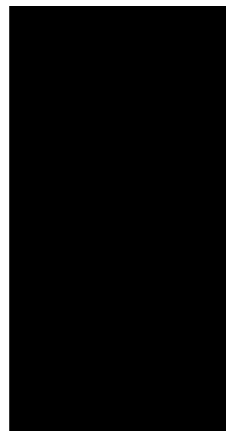


## Melaminici/Melamine

Nero lucido  
Glossy black



Nero opaco  
Matt black



Avorio effetto similpelle  
Ivory eco-leather effect



## Pelle/Leather

Ecopelle avorio  
Ivory eco-leather



Ecopelle testa di moro  
Brown eco-leather

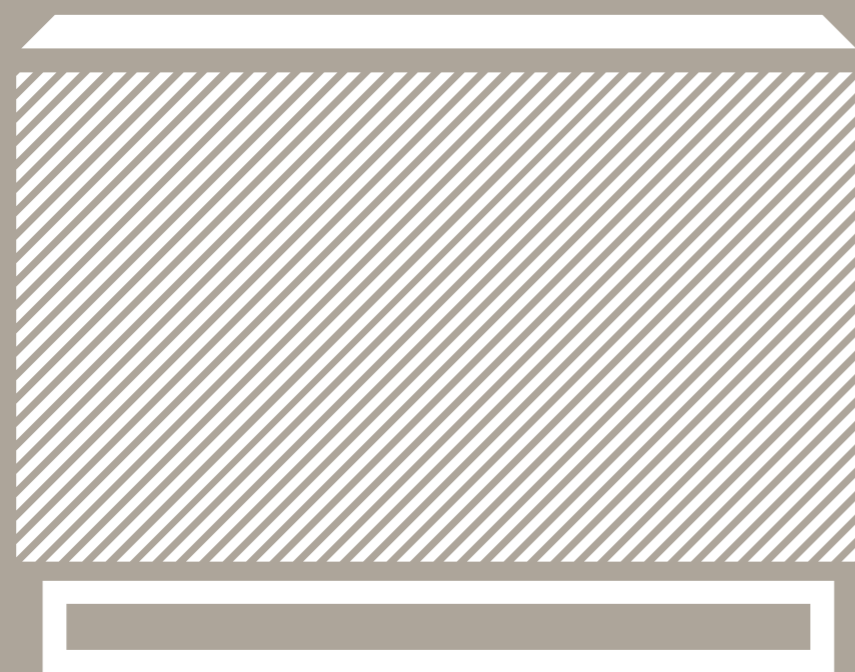


# Libra

**Libra propone un design rigoroso ed equilibrato come sa essere la bilancia della Giustizia.**

**Libra offers a rigorous and balanced design as the Scales of Justice.**

I Rovereschi – Collection



La sensazione di solidità della struttura di Libra è immediata, con il legno in forte spessore usato sia per il piano che per le alzate. Su questa forza posa a pieno uno strato di pelle che ricopre l'intero piano scrivania e prosegue lateralmente nella pannellatura delle gambe.

Una copertura interrotta solamente dagli elementi distanziatori in acciaio ottonato, tratto distintivo di Della Rovere, che sagomano i profili di questa scrivania.

Ad alleggerire l'imponenza di Libra sono proprio gli elementi di appoggio a terra, anelli rettangolari di acciaio ottonato che la fanno sembrare quasi sospesa a un filo da terra.

Il pannello modesty, qui in legno laccato lucido nero come tutta la parte interna, crea movimento sia nel lieve riflesso di luci che produce a seconda del punto di vista, sia con la rifinitura opaca degli altri legni.

The feeling of solidity of the Libra structure is immediate. The supporting elements on the ground, rectangular brass-plated steel rings, lighten the grandeur of Libra and make it seem almost suspended from the ground. On this strength a full layer of ivory leather lays and covers the entire desktop and continues laterally in the paneling of the legs.

This covering is interrupted only by the brass-plated steel spacer elements a distinctive feature of Della Rovere, that shape the profiles of this desk.

The supporting elements on the ground, rectangular brass-plated steel rings, lighten the grandeur of Libra and make it seem almost suspended from the ground.

The modesty panel, here in black glossy lacquered wood like the whole internal part, creates movement both in the slight reflection of lights it produces depending on the point of view, and with the matt finish of the other woods.

**Forte Presenza/  
Effetto Levitazione**  
Strong Presence/  
Levitation effect



























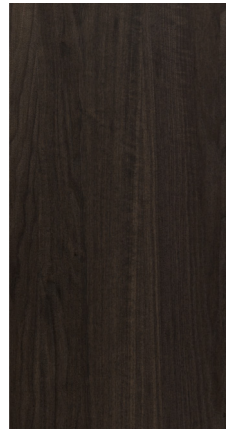
# Finiture Finishes

## Legno/Wood

Noce fumè  
Smoked walnut



Rovere cioccolato  
Chocolate oak



## Metallo/Metal

Oro/Bronzo  
Gold/Bronze

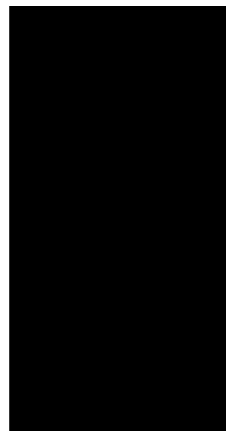


## Melaminici/Melamine

Nero lucido  
Glossy black



Nero opaco  
Matt black



Avorio effetto similpelle  
Ivory eco-leather effect



## Pelle/Leather

Ecopelle avorio  
Ivory eco-leather



Ecopelle testa di moro  
Brown eco-leather



**Consonanze /  
I Rovereschi abbinabili ai direzionali  
delle tre collezioni  
per analogie di design e materiali**

**Consonances /  
Rovereschi combinable with directional  
of the three collections  
for similarities of design and materials**

**mobile contenitore cabinet  
tavolo riunioni meeting table  
sedute sedute**







# Cadira presidenziale



I Rovereschi — Collection



I Rovereschi — Collection







# Cadira visitatore



I Rovereschi — Collection









Abaco  
Abacus

# I Rovereschi Collection

I Rovereschi — Collection



N1



N2



N9



N10



N3



N4



N11



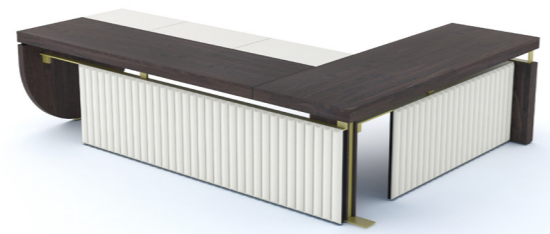
N12



N5



N6



N13



N14



N7



N8



N15









L1



L2



L10



L11



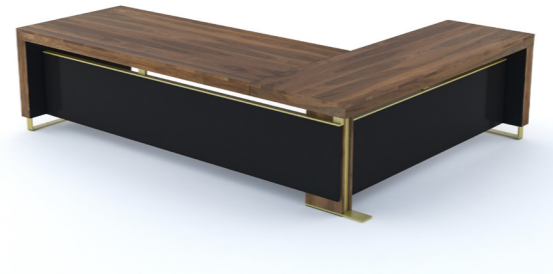
L3



L4



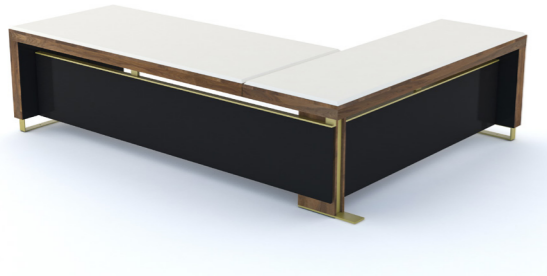
L12



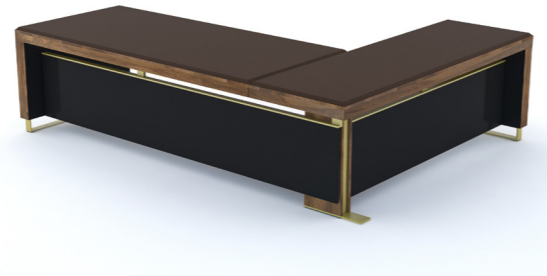
L13



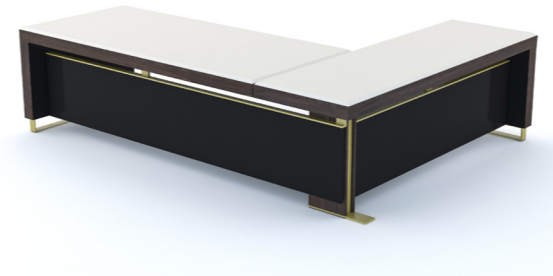
L5



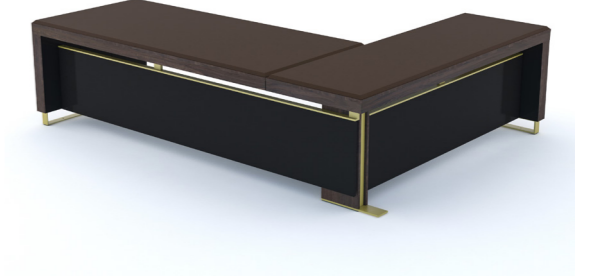
L6



L14



L15



L7



L8



L9



L16



L17





**Complementi comuni**  
**Common Elements**

**Cassettiera  
Pedestal**

C1

C2

C3

C4



**Meeting**

C13

C14



**Mobile  
di servizio  
Service unit**

C5

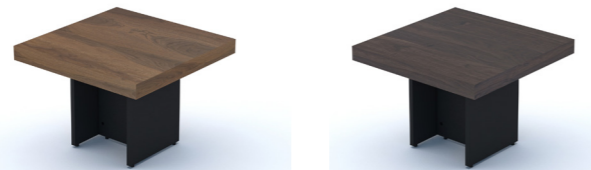
C6



**Tavoli da caffè  
Coffee table**

C7

C8



C9

C10



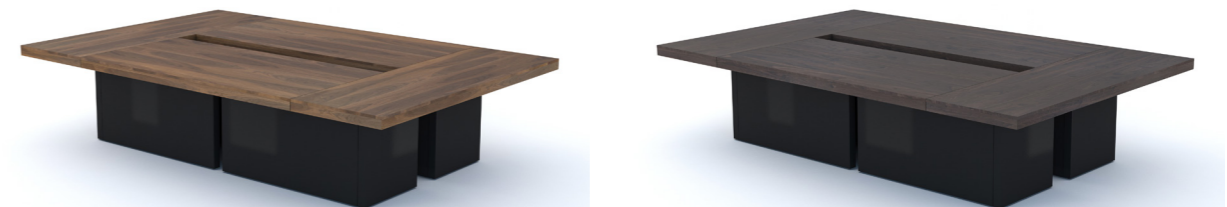
C11



C12

C15

C16



C17

C18



C19

C20





**C21**



**C22**



**C23**



**C24**



**C25**



**C26**



**C27**



**C28**



**C29**



**C30**



**C31**



**C32**



**C33**



**C34**



**C35**



**C36**



**C37**



**C38**



**C39**



**C40**





**Noce fumè**  
**Smoked walnut**



I Rovereschi — Collection

**Rovere cioccolato**  
**Chocolate oak**

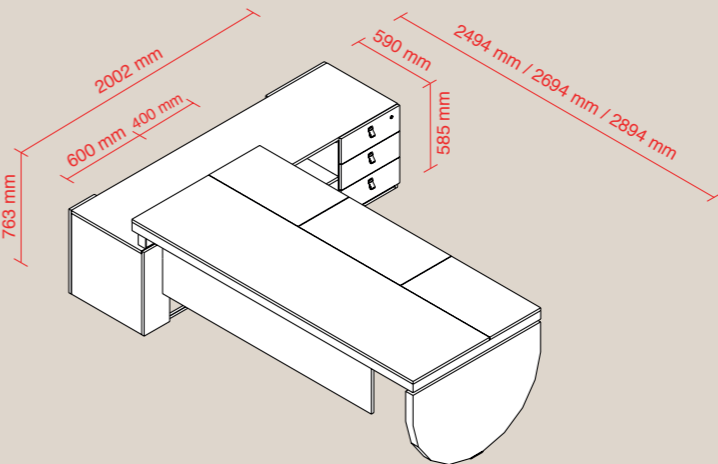
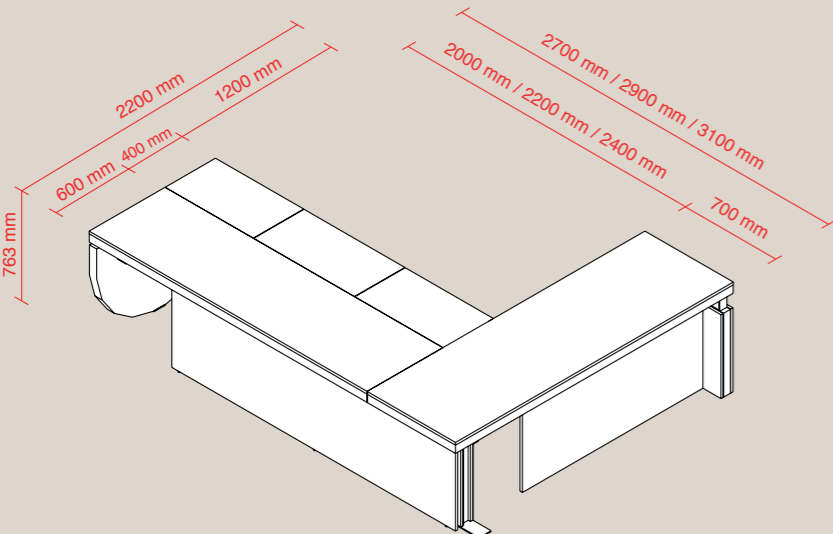
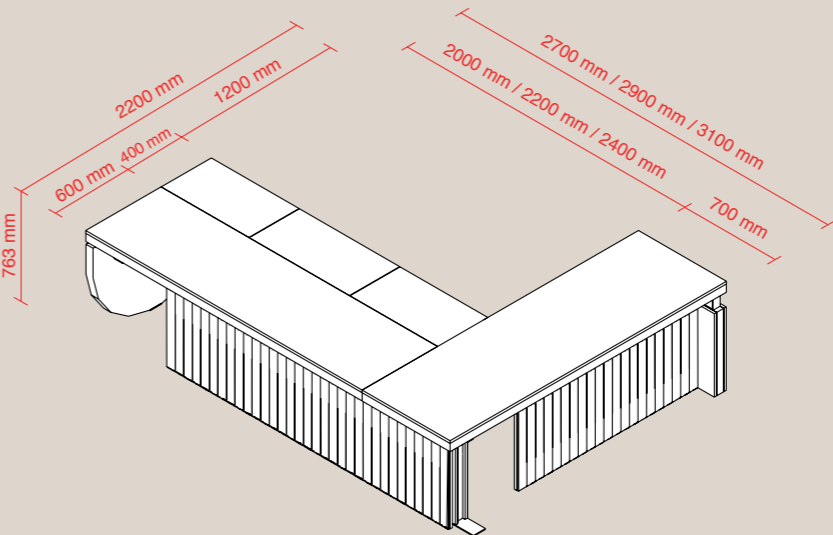
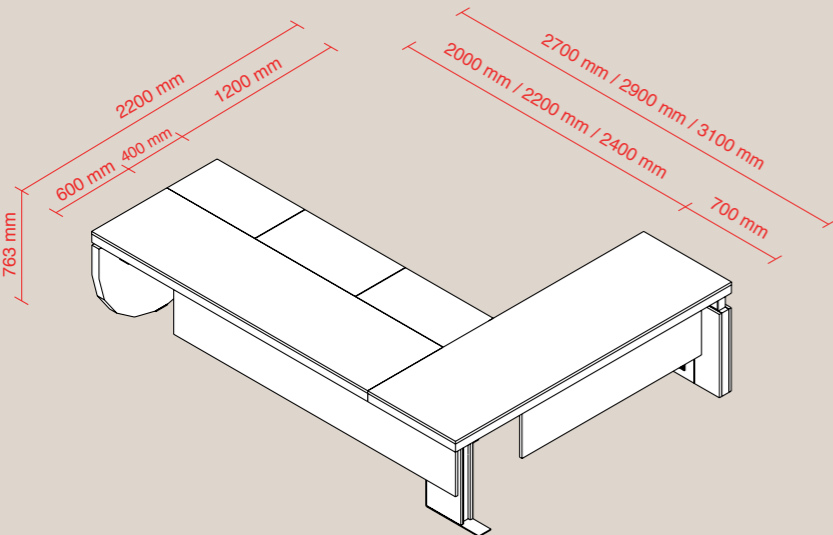
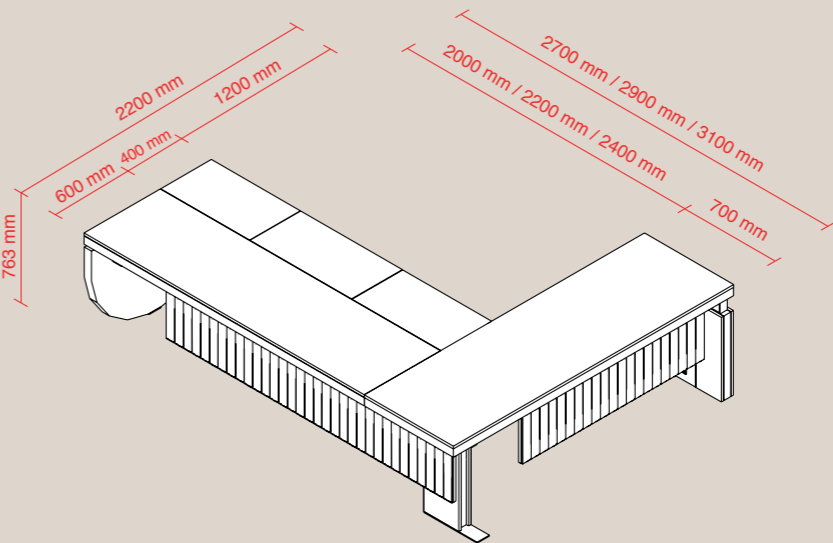
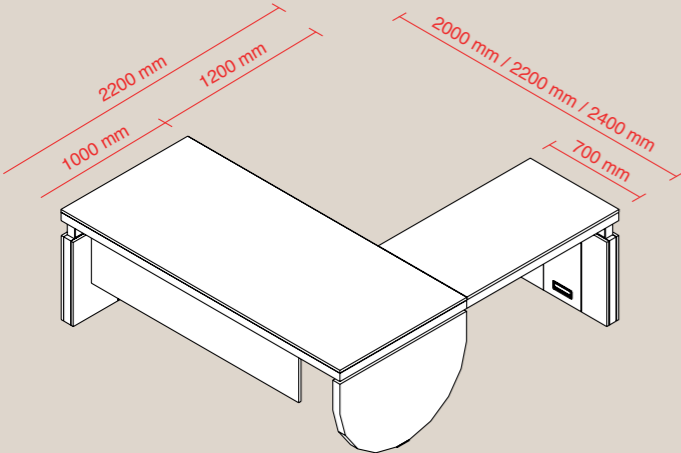


I Rovereschi — Collection



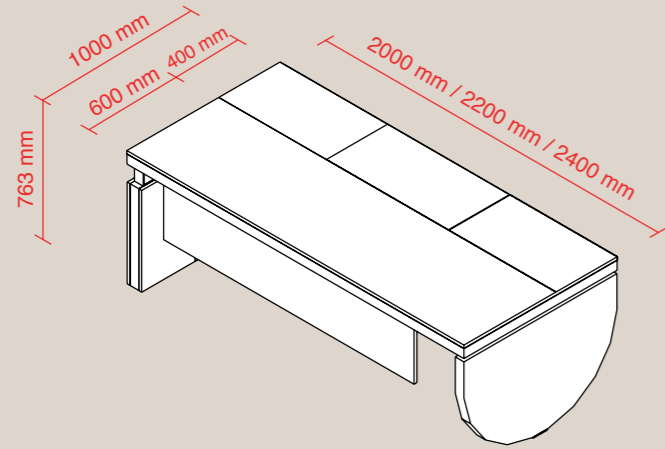
**Presidenziali  
Executive**

**Narciso**

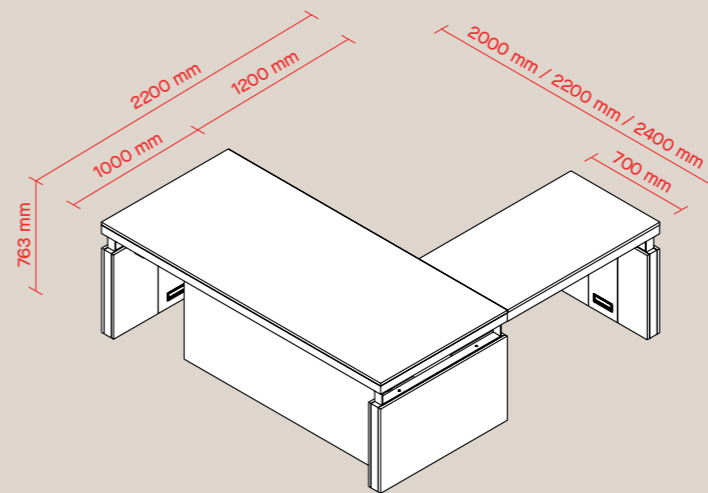
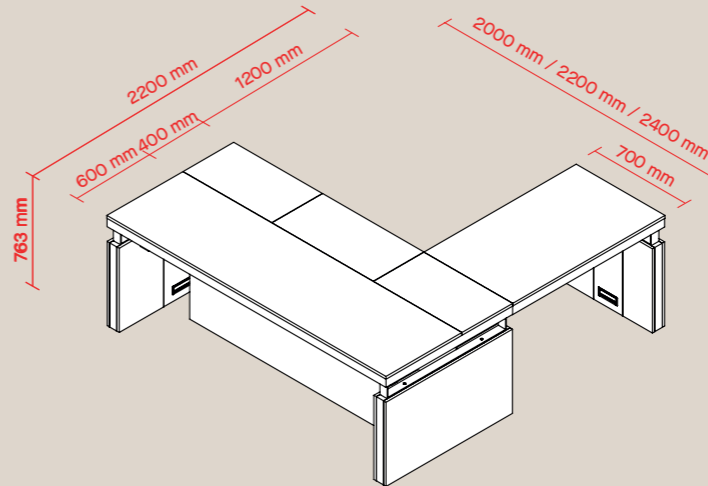
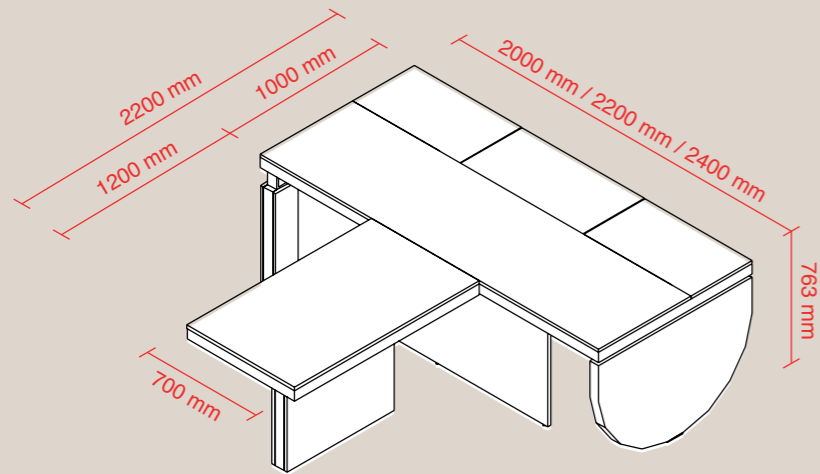
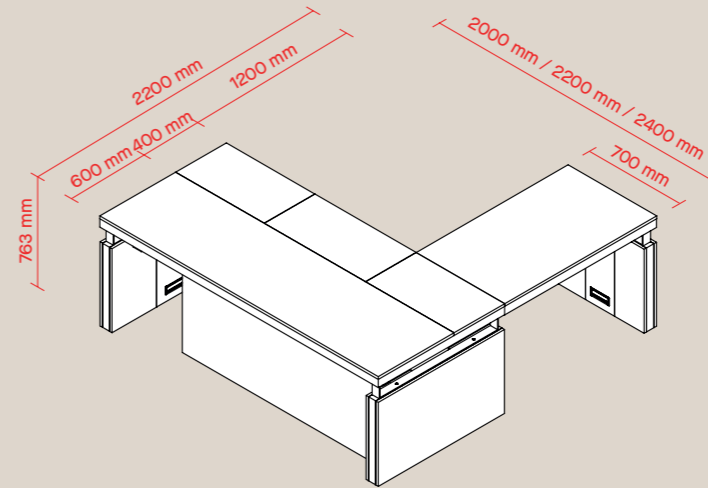




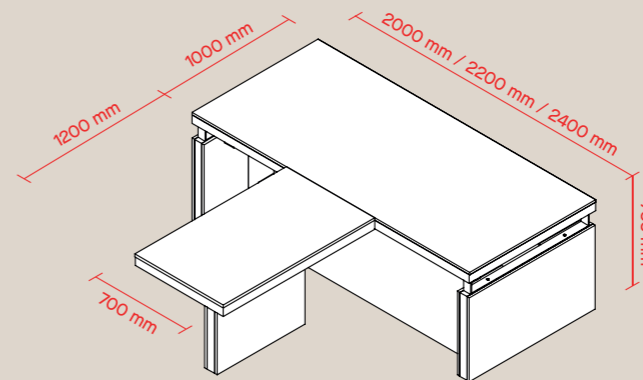
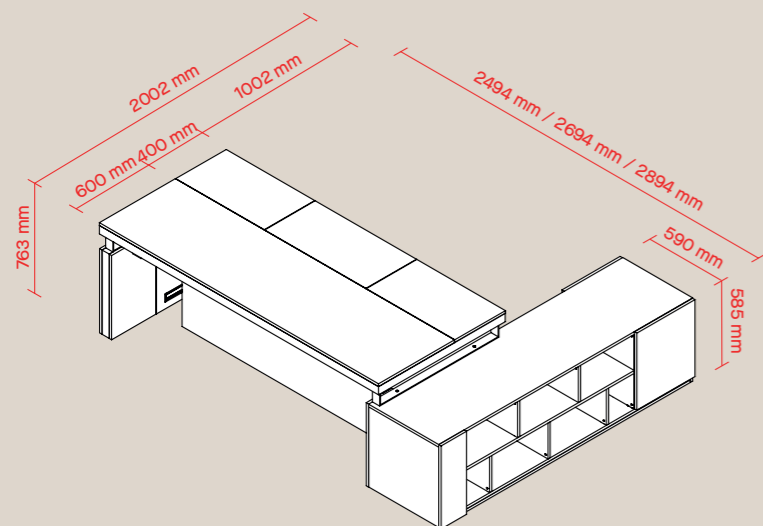
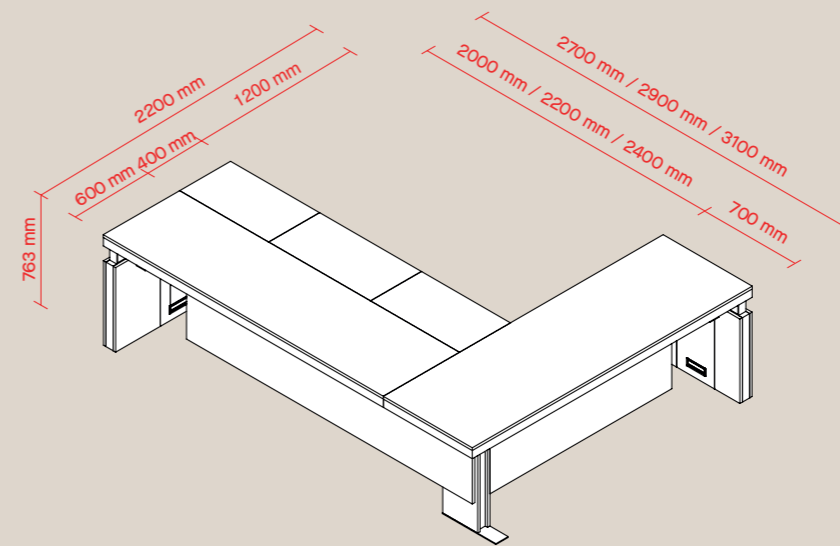
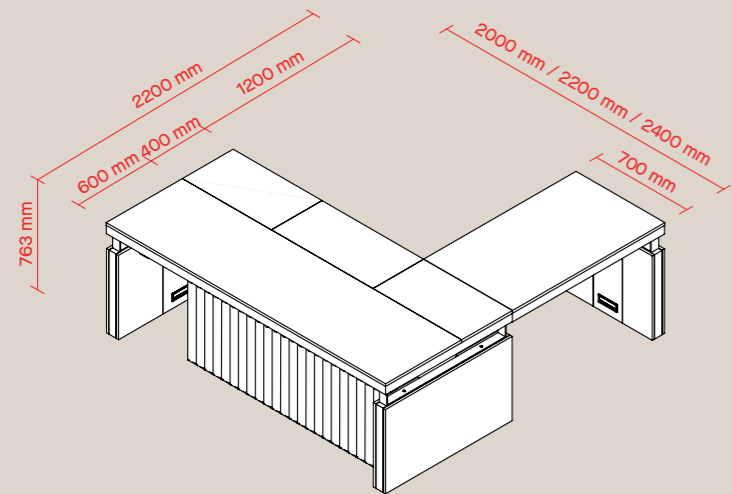
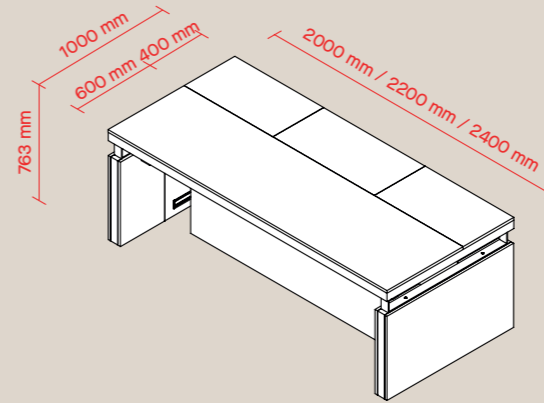
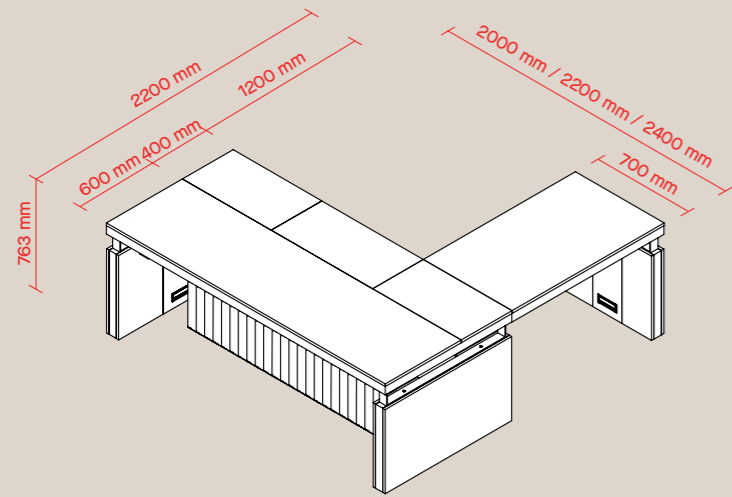
**Presidenziali  
Executive**



**Bellagio**



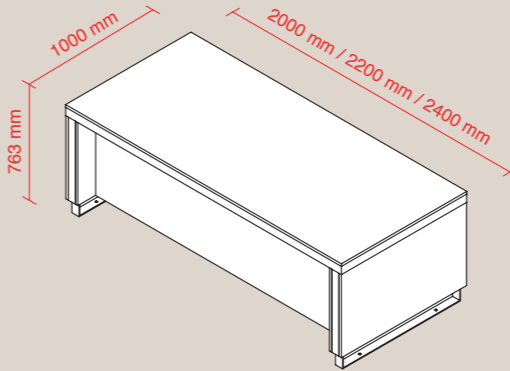
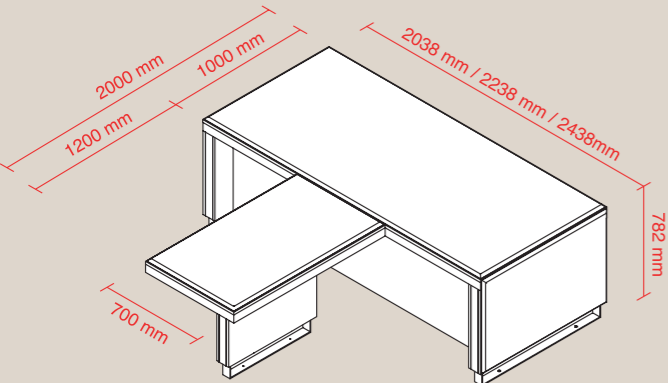
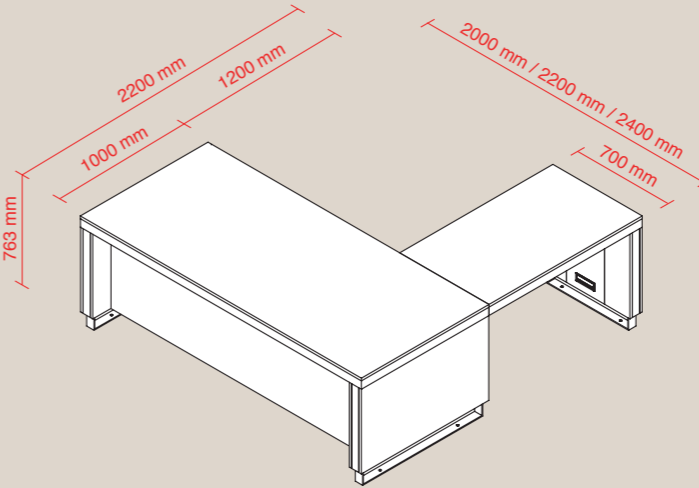
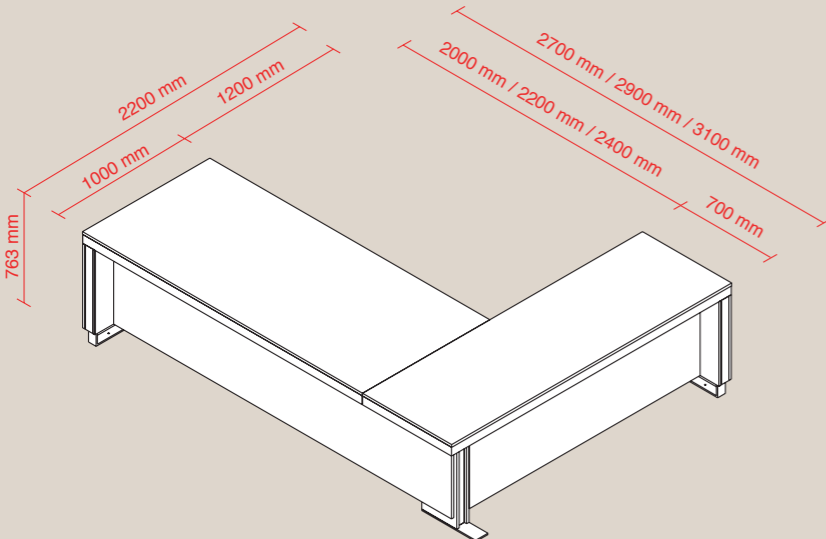
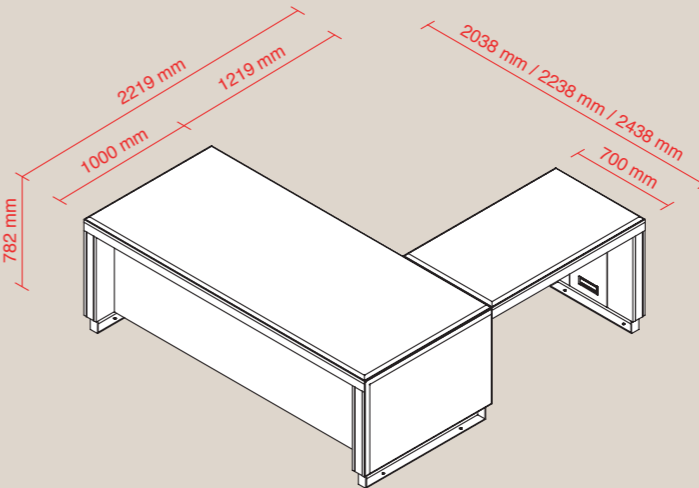
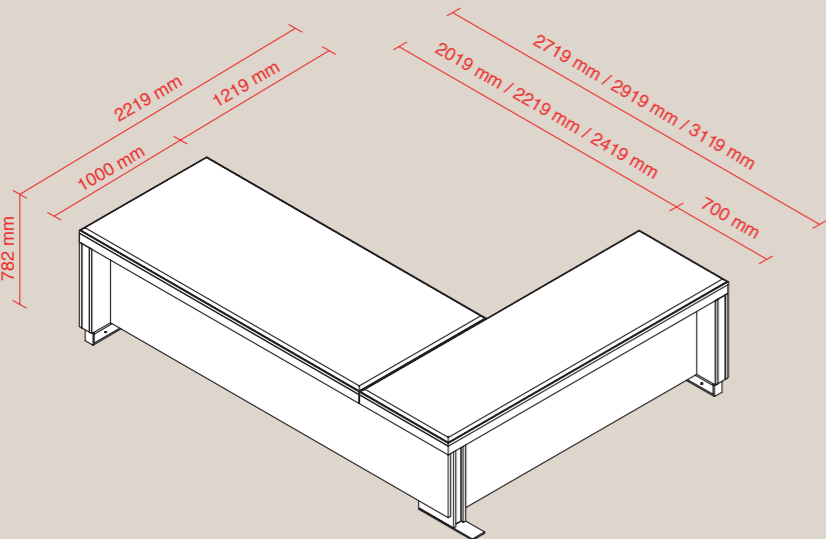






**Presidenziali  
Executive**

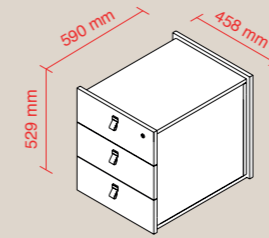
**Libra**



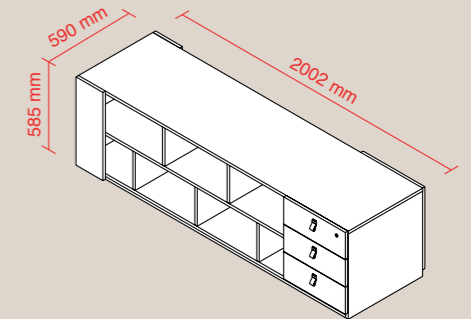


## Complementi comuni Common Elements

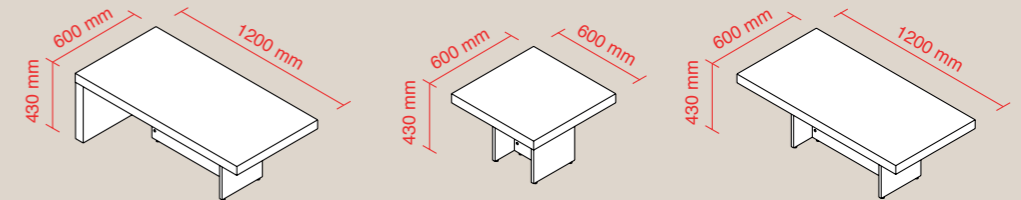
### Cassettiera Pedestal



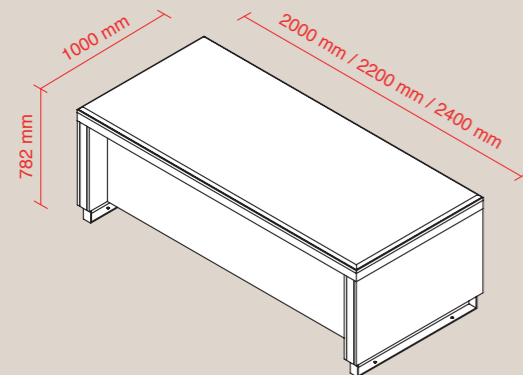
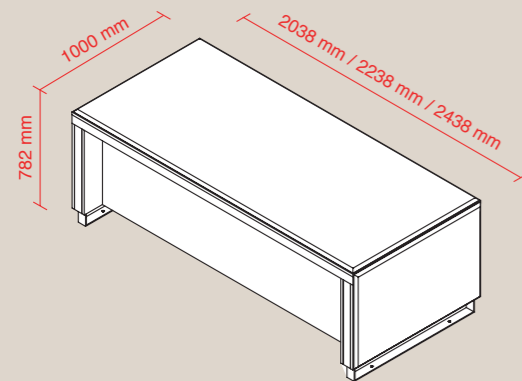
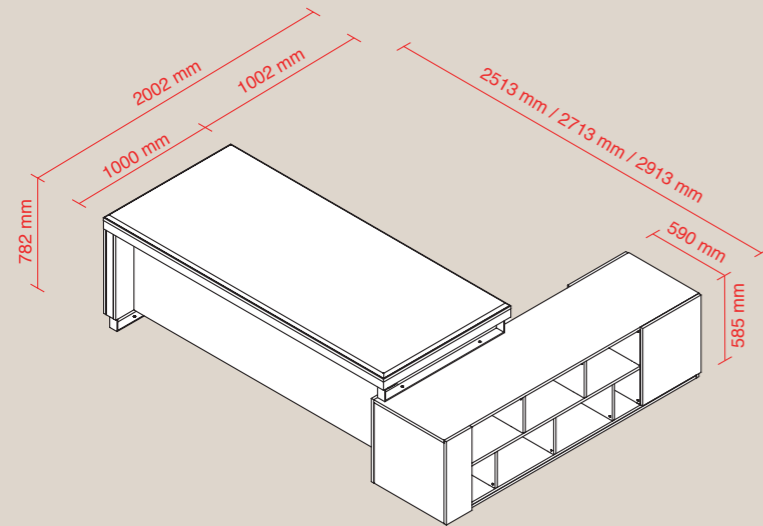
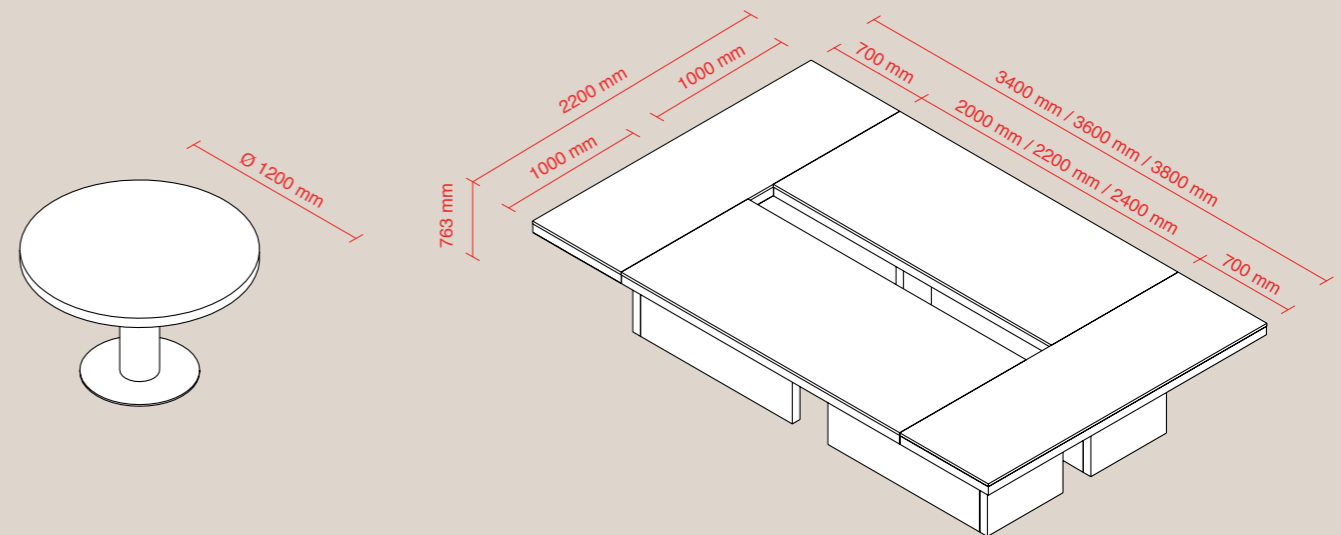
### Mobile di servizio Service unit



### Tavoli da caffè Coffee table



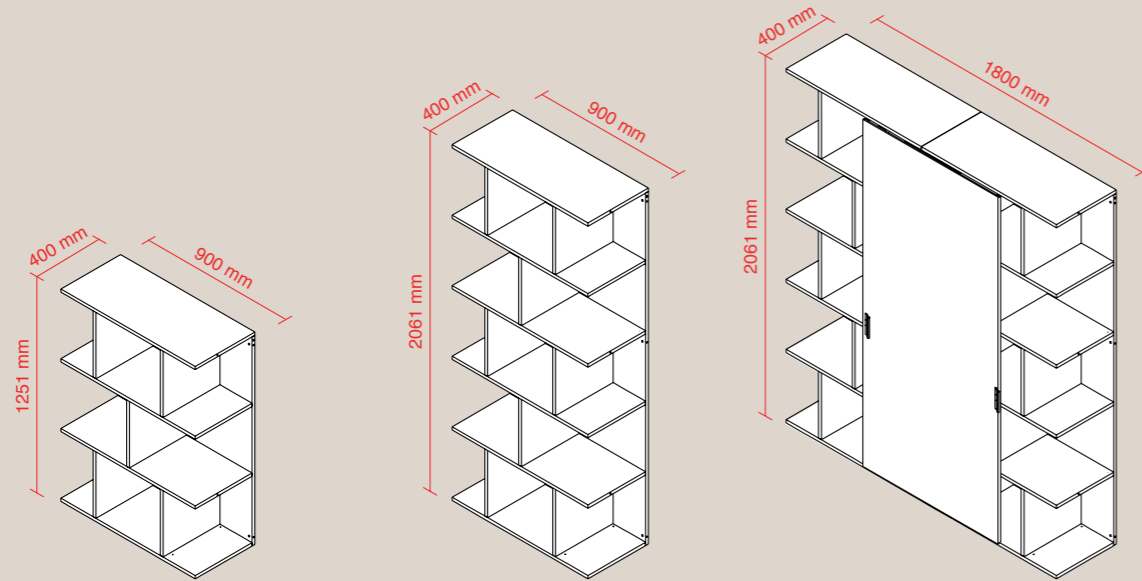
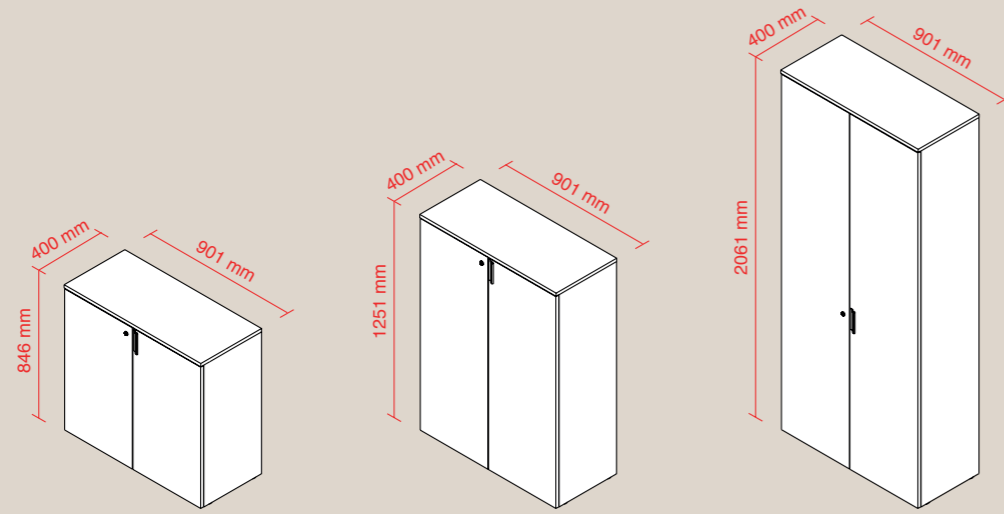
### Meeting





**Complementi comuni**  
**Common Elements**

**Librerie**  
**Cabinets**



**Librerie**  
**Cabinets**

